



**HITZE**  
PRODUCER OF FIREPLACES

# FIREPLACE CASSETTES

---

**CUBO 700**  
**CUBO 800**

# Join the group of those *who chose well.*

---

Hitze is a modern brand of ecological fireplace inserts and free-standing stoves. We have specialized in **wood-fired appliances** for over 20 years. Our headquarters and the entire production are located in Poland, but our representatives can be found in over **35 countries** in Europe, Africa and Asia.

The dynamic development over the last 5 years has strengthened our position in the segment of high-quality products while maintaining **competitive prices**.

## **CUBO** CASSETTE SYSTEM

---



4 kW

ADJUSTABLE POWER RANGE

12 kW

The CUBO fireplace cassette is the perfect choice for installations that use the existing open hearths. For this purpose, the construction focused on **the small size** and the possibility of installing the exhaust outlet from the center of the combustion chamber. At the same time, the **front doors and their modern glazing are maximized**. Another advantage of the CUBO model is the option of forced air circulation around the cassette (cooling function) and the increase of the heating effect in the room.

Installation of the CUBO cassette with the use of non-flammable materials **allows to significantly reduce the size of the casing**. At the same time the built-in option of connecting the hot air distribution system allows for effective heating of adjacent rooms. The CUBO cassette is adapted to work with a heating power from 4 kW, which makes it an **ideal choice for passive houses**.

# TECHNICAL SOLUTIONS



Built-in possibility of connecting the cassette to the **hot air distribution system** (2 x  $\varnothing$ 100 mm).

Exhaust outlet  $\varnothing$  150 mm mounted from the inside of the insert allows for installation in existing open furnaces.

New door design with a minimalist and **elegant Decor glass**.

**The new air supply and circulation system** is a comprehensive solution that guarantees ecological burning of wood and a beautiful, clear vision of fire.

**A massive and durable combustion chamber** made of Akuceram significantly improve the ecology of burning.

**A deepened grateless hearth** means safety and the possibility of larger loads of wood.

**An automatic fan set** circulates warm air in the room\*.

Efficiency  
**85%**

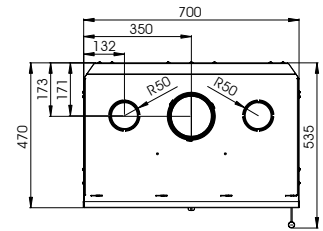
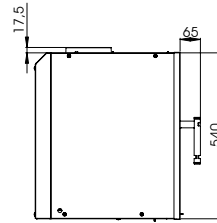
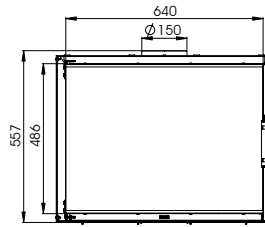
Intuitive combustion control with a single throttle.

Air inlet  $\varnothing$  100 mm  
**(mounted on the back or bottom).**

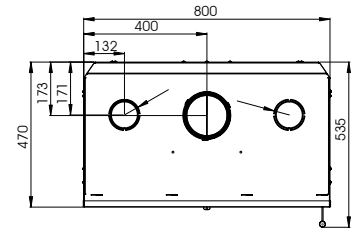
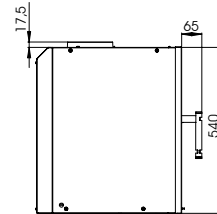
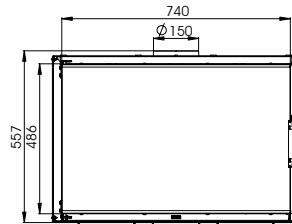
*\*optional, ask the Seller.*

## MOUNTING DIMENSIONS

### CUBO 700



### CUBO 800



*Changing the direction of opening the door is possible only while ordering.*

## PARAMETERS

		<b>CUBO 700</b>	<b>CUBO 800</b>
Nominal power	kW	8,5	9,5
Heating load range	kW	4,0-10,0	4,5-12,0
Thermal efficiency	%	87,0	88,0
CO emission (at 13% O <sub>2</sub> )	g/m <sup>3</sup>	1,002	1,159
CO emission (at 13%O <sub>2</sub> )	%	0,0802	0,0927
Dust emission (at 13%O <sub>2</sub> )	g/m <sup>3</sup>	0,025	0,025
Average fuel consumption	kg/h	2,3	2,5
Glass dimensions	mm	640x481	740x481
External dimensions	mm	700x540x470	800x540x470
Diameter of the flue	mm	150	150
Inlet diameter	mm	100	100
Maximum log length	mm	350	400
Weight	kg	114	127
Exhaust gas temperature	°C	165	152
Effectiveness Coefficient		116,1	117,6
Energy class		A+	A+

# ADVANTAGES OF THE CUBO CASSETTE

## *Benefits of using a fan set:*

- increasing the amount of heat radiated to the room,
- more efficient distribution of hot air in the room,
- better cooling of the cassette.



## *Comfort for the user:*

- the set of fans turns on and off automatically,
- fans are aesthetically hidden behind the cover and the cassette door,
- the quiet operation of the cassette does not disturb the atmosphere of burning fire.

## *Ready to work with the Hot Air Distribution System:*

- additional connectors allow the transmission of heat to other rooms,
- additional cover increases the efficiency of this type of installation.



## *Design of the CUBO cassette offers:*

- maximum enlargement of the glazing enhancing the vision of fire,
- elegant black print on the glass that allows to fit the cassette into modern interiors,
- deepened hearth for convenient wood loading and keeping it clean.

## *Intuitive adjustment while burning:*

- a single throttle valve controls primary air entering from holes inside the cassette,
- The air entering the air curtain is fixed in order to guarantee a perfectly clean glass.



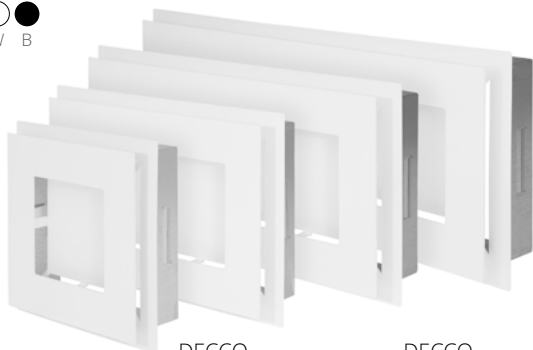
## *Optional three ways of air supply:*

- air intake from the bottom,
- air intake from the back,
- taking air from the room without connection to the outside air.

# VENTILATION GRIDS

## DECCO

Available in various colors and sizes.  
Material: steel with a thickness of 1.5 mm.  
Mounting frame included.



DECCO  
size: 20 x 20 cm  
KDC-20x20-W

DECCO  
size: 20 x 30 cm  
KDC-20x30-W

DECCO  
size: 20 x 40 cm  
KDC-20x40-W

DECCO  
size: 20 x 50 cm  
KDC-20x50-W

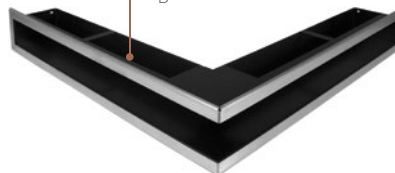
## SLIM

Available in various shapes and sizes.  
Shapes: straight and corner  
Material: steel with a thickness of 1.5 mm



## SLIM INOX

Available in various shapes and sizes.  
Base colors: black  
Finish: stainless steel, polished  
Shapes: straight and corner  
Material: steel with a thickness of 1.5 mm



# FIREPLACE PERSONALIZATION

## CHANGEABLE HANDLES



INOX VENT



INOX VENT PORTAL



BLACK VENT



BLACK VENT PORTAL

## BIO-INSERT



Bio-insert LARGE WBN-03  
capacity: 1,6 l

## MASKING FRAMES



FAL CU 70  
FAL CU 80

## BLACK CERAMIC CONCRETE INSERT - AKUCERAM



## CONNECTORS FOR HOT AIR DISTRIBUTION



DGP-CU

# HITZE

FIREPLACES  
for recuperation



[www.hitze.pl](http://www.hitze.pl)


 HITZE Natural Heating


 HITZE\_Natural\_Heating

 HITZE Natural Heating

STALKO  
spółka z ograniczoną odpowiedzialnością  
spółka komandytowa  
ul. Solec 24/253  
00-403 Warszawa, Poland

Biuro:  
Gdyńska 32  
26-600 Radom  
Poland

 +48 48 380 18 98  
+48 800 88 00 30

 [handlowy@hitze.stalko.com](mailto:handlowy@hitze.stalko.com)  
[export@hitze.stalko.com](mailto:export@hitze.stalko.com)

NIP 9482603545  
REGON 361379132  
Reg. No. 0000836475

RAL colours presented on product visualisations are for reference only and their shades may slightly differ from the real colour.

The company reserves the right to introduce changes in the technical parameters, equipment and specifications of the offered products. The information in the catalog is for information purposes only and does not constitute an offer within the meaning of the Civil Code.