

BASIC PRODUCT INFORMATION

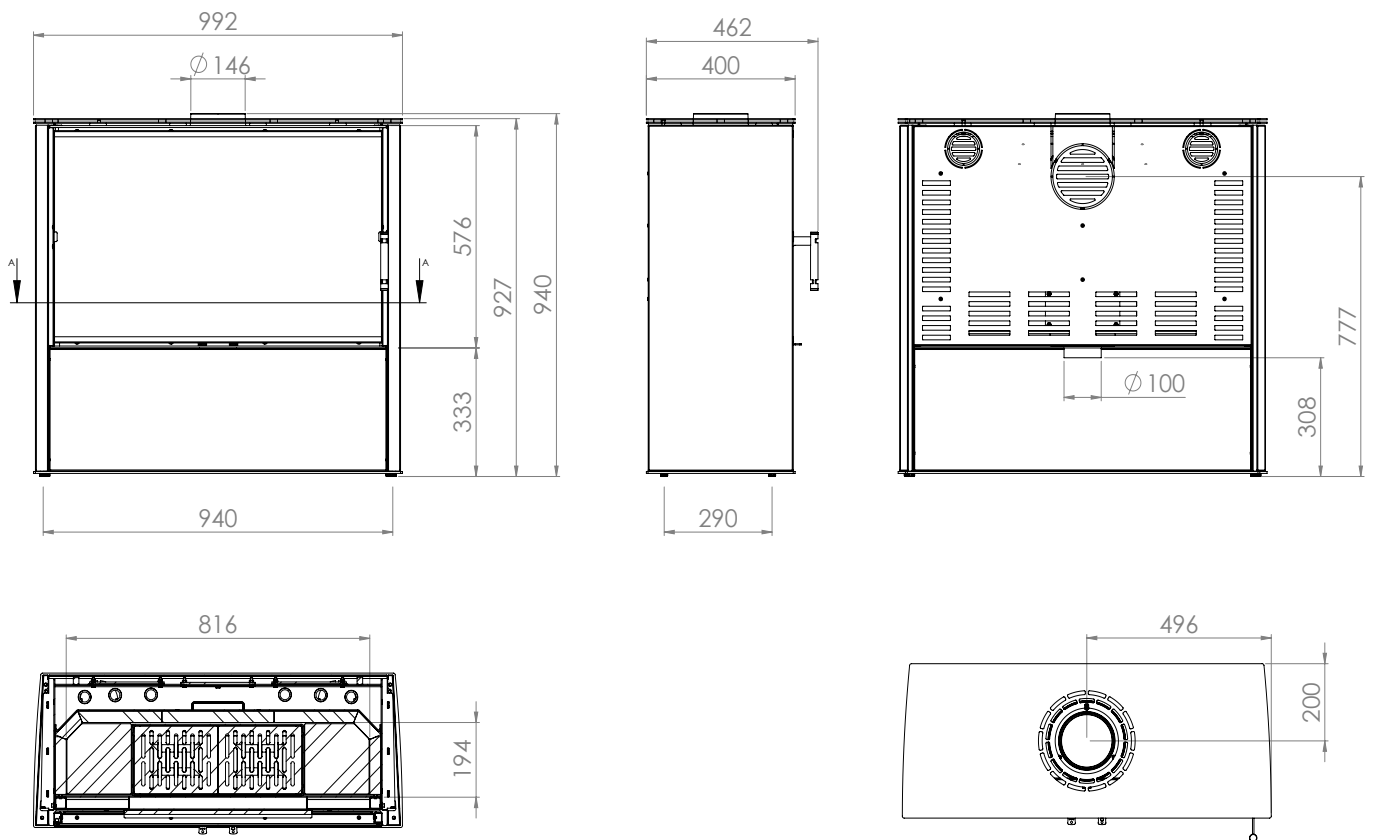


- Cast iron flue, grate and decor glass as standard.
- Combustion chamber lined with acubet.
- Two flue mounting options - from the top or from the back (when positioned at the back, the main opening is plugged with the heating plate).
- Housing sides available in different colours.
- Possibility of connecting a DGP.
- Independent regulation of primary and secondary air supply, using two levers.
- Modular base - four mounting options (on legs or with a recess for wood).
- Fuel: seasoned hardwood (beech, birch, hornbeam) with moisture content < 20%.

| | |
|---------------------------------|---------|
| Nominal power [kW] | 11 |
| Heating load range [kW] | 5,5-14 |
| Thermal efficiency [%] | 82 |
| CO emission (at 13% O2) [g/m3] | 0,028 |
| Dust emission [g/m3] | 0,921 |
| Average fuel consumption [kg/h] | 3,3 |
| Glass dimensions [mm] | 880x540 |
| Flue diameter [mm] | 150 |
| Inlet diameter [mm] | 100 |
| Weight [kg] | 190 |
| Efficiency coefficient | 109,9 |



LUPO L



PRZEKRÓJ A-A

LUPO L